

SERIES: InterBolt™ Local Load Monitoring Kit



The local monitoring kit is used to visualise bolt load data on-site during installation and maintenance activities.

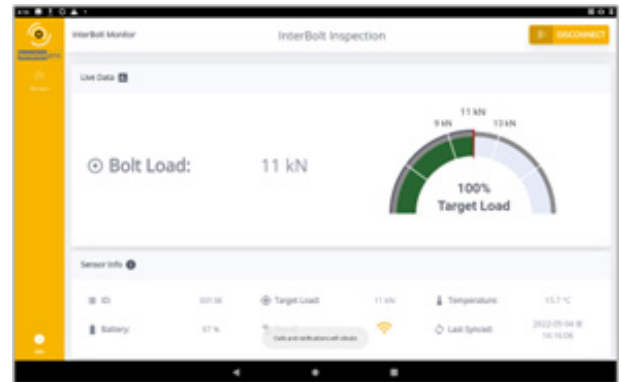
Kit contains:

- InterBolts
- Ruggedised Andriod Tablet with InterBolt app
- InterBolt bridge (LoRa/ BLE)
- Storm case with protective inlay
- Magnet (COMUS)
- Docking station
- USB C cable, Micro USB cable

APP SCREENS

The InterBolt app consist of two screens:

- InterBolt List. This is used to visualise data from multiple InterBolts
- InterBolt Inspection. This is used to visualise data from a single InterBolt



- The bridge has a battery life of approx. 8 hours. In between shifts, it should be recharged using the micro USB socket
- InterBolt will stay active for around two minutes after it has been woken up with a magnet
- After powering on for the first time, the tablet will take approximately 20 seconds to fully boot